



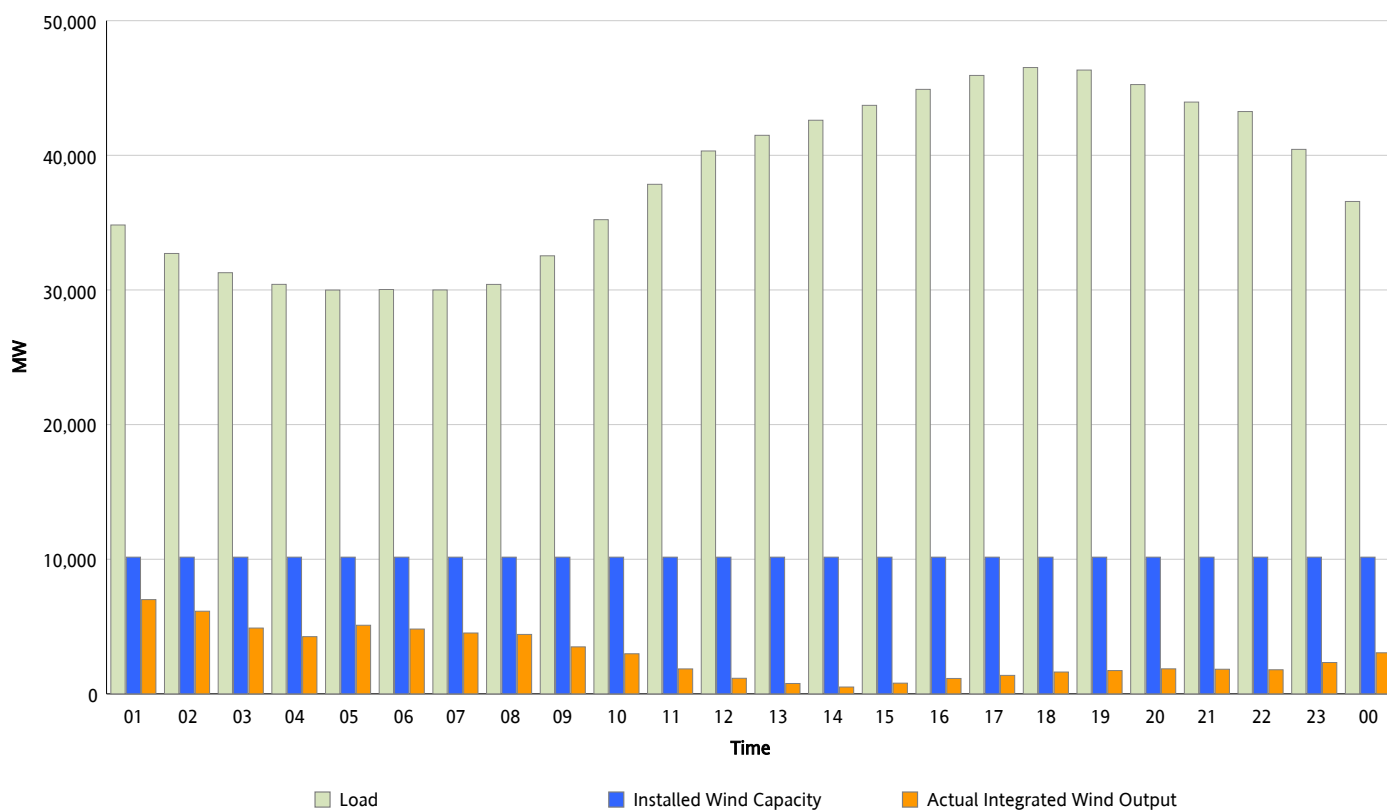
ERCOT Grid Operations

Wind Integration Report : 06/09/2013

Peak Load	46,522 MW
Load Peak Hour (HE)	18
Wind Over Peak	1,624 MW
Wind Record 05/02/13	9,674 MW
Max Wind Value*	7,203 MW
Wind Peak Time	00:32
Wind Integration %	20.76 %

Hourly Average Actual Load vs. Actual Wind Output

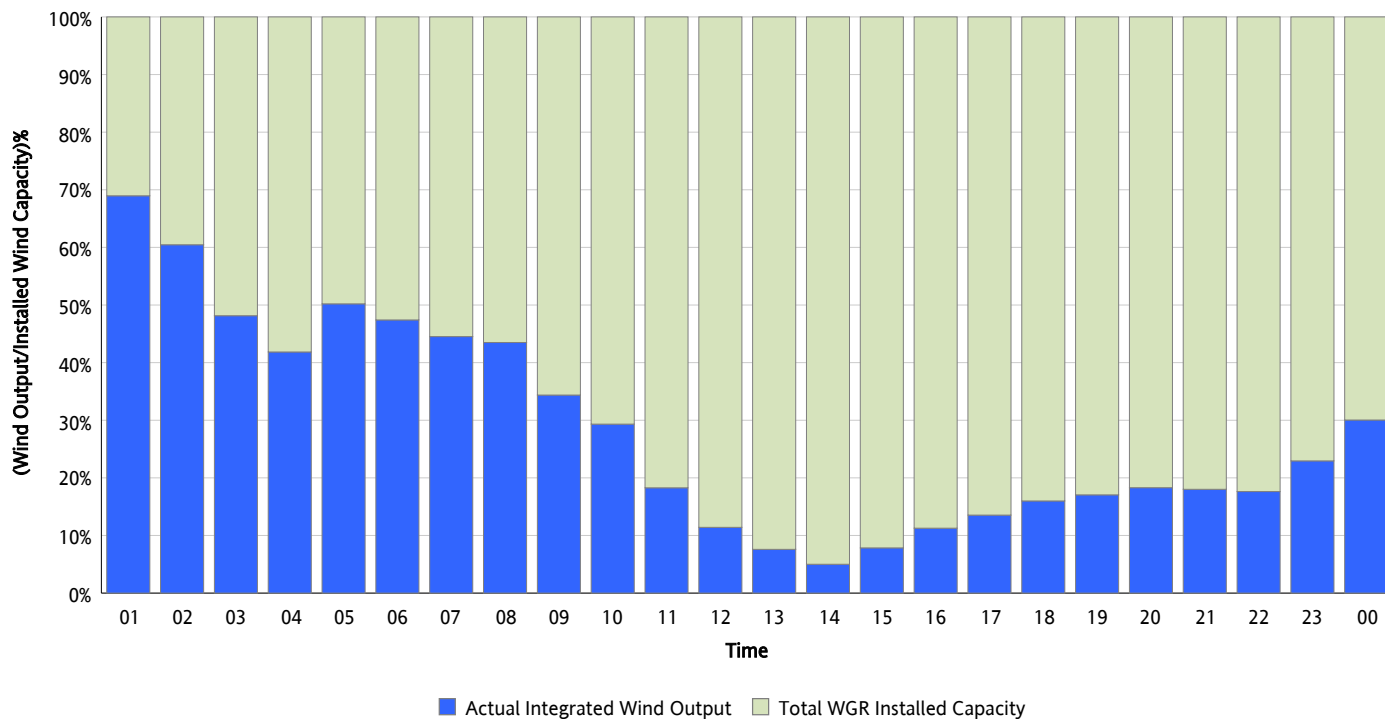
06/09/2013



* Wind Record and Wind Max represent instantaneous values and the rest of the values are integrated over the hour

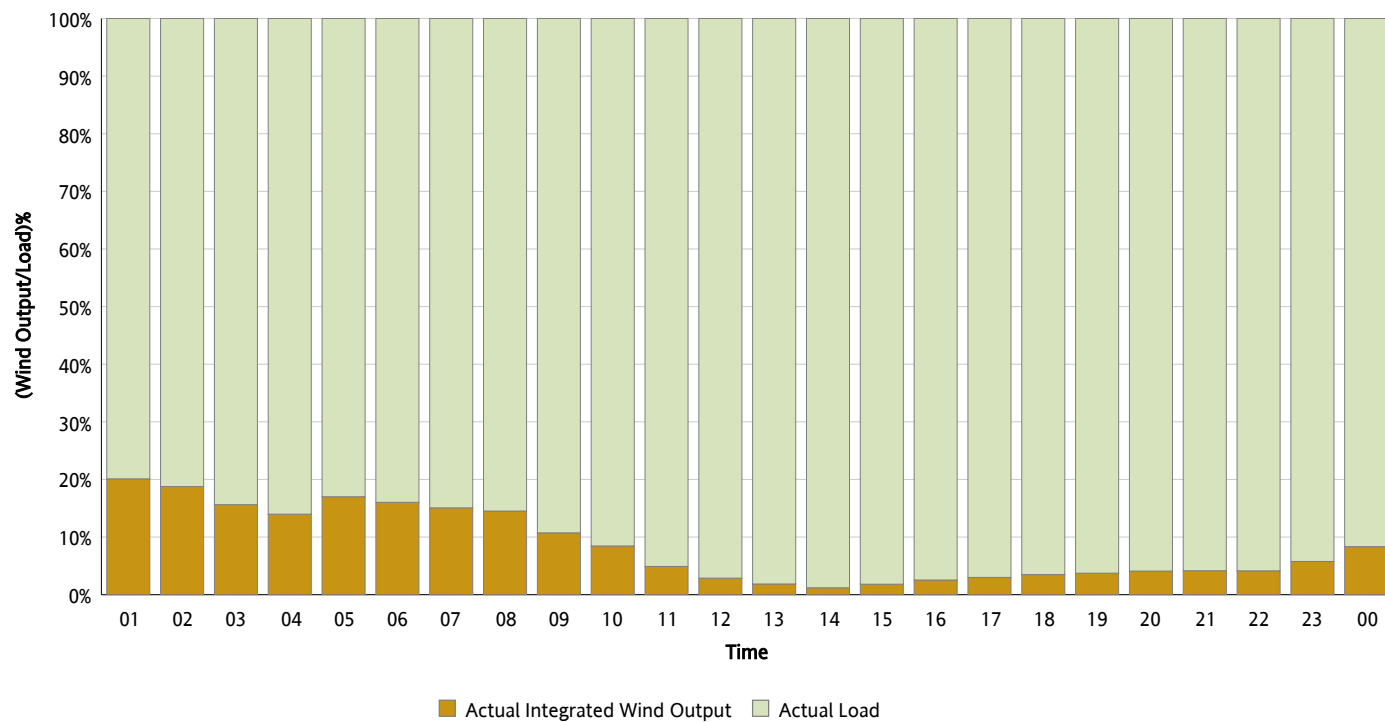
Actual Wind Output as a Percentage of the Total Installed Wind Capacity

06/09/2013



Actual Wind Output as a Percentage of the ERCOT Load

06/09/2013



ERCOT Load vs. Actual Wind Output

06/02/2013 - 06/09/2013

